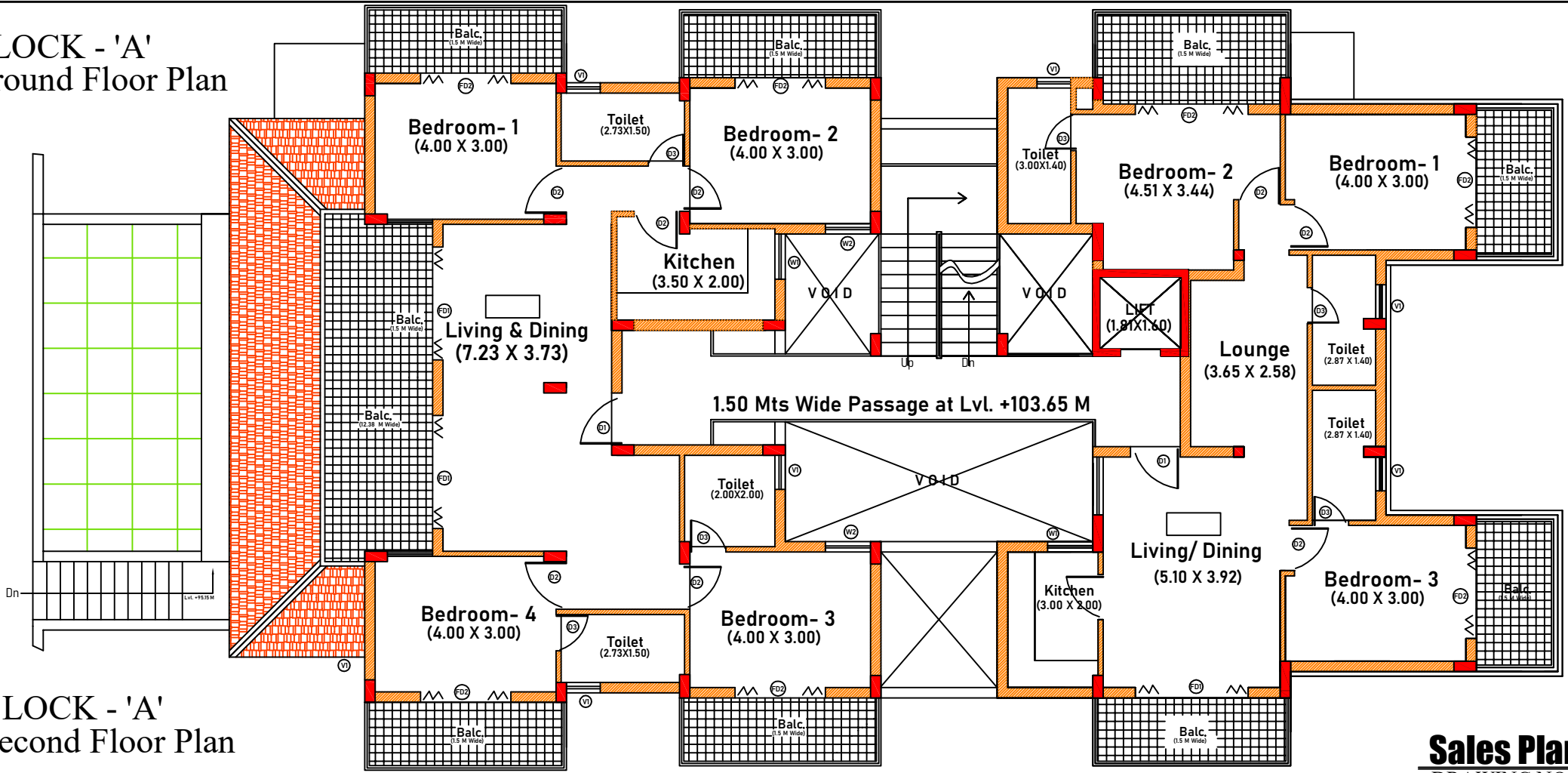


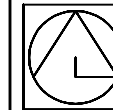
BLOCK - 'A'
Ground Floor Plan



BLOCK - 'A'
Second Floor Plan

Sales Plans
DRAWING NO.-01

PROPOSED RESIDENTIAL BUILDING FOR M/s VISION HOSPITALITY & ESTATES (P) LTD
ON PROPERTY BEARING SURVEY NO, 55/3&4 OF VILLAGE MARNA, BARDEZ, GOA



Bryan Da Silva
ARCHITECTS- INTERIOR DESIGNERS & PROJECT CONSULTANTS
Bar-04, 10th, 11th, 12th, 13th, 14th, 15th, 16th, 17th, 18th, 19th, 20th, 21st, 22nd, 23rd, 24th, 25th, 26th, 27th, 28th, 29th, 30th, 31st, 32nd, 33rd, 34th, 35th, 36th, 37th, 38th, 39th, 40th, 41st, 42nd, 43rd, 44th, 45th, 46th, 47th, 48th, 49th, 50th, 51st, 52nd, 53rd, 54th, 55th, 56th, 57th, 58th, 59th, 60th, 61st, 62nd, 63rd, 64th, 65th, 66th, 67th, 68th, 69th, 70th, 71st, 72nd, 73rd, 74th, 75th, 76th, 77th, 78th, 79th, 80th, 81st, 82nd, 83rd, 84th, 85th, 86th, 87th, 88th, 89th, 90th, 91st, 92nd, 93rd, 94th, 95th, 96th, 97th, 98th, 99th, 100th.